

The Geometridae of Sokotra islands (Yemen)

Axel Hausmann & Aidas Saldaitis
Version January 31, 2008

Joint project of the

[Zoologische Staatssammlung München](#) (Dr. Axel Hausmann)

Sokotra Museum of natural History (SCDP, Hadibu, Sokotra, Yemen) and the

[Barcode of Life Data Systems](#) / [Global Campaign Geometridae](#) (Dr. Paul Hebert, Canada)

The whole list actually contains 26 geometrid species, cf Hausmann (2006; 2009)

The whole material was collected by the junior author, major parts of the material will be deposited in SCDP, smaller samples also in ZSM Munich and coll. Saldaitis/Museum Vilnius, Lithuania

“BC” = barcoded specimens (COI 5’) with ID-number

[LINK to Neighbor Joining Tree](#), Kimura 2 Parameter, BOLD database / MEGA4, provided by the courtesy of Paul Hebert, CCDB, Canada

[pdf of version 1 \(January 31, 2009\)](#)

Sokotran habitats

(all photos: Aidas Saldaitis)



([legend](#) - [highres](#))



([legend](#) - [highres](#))



([legend](#) - [highres](#))



([legend](#))



([legend](#))

Systematic account

Larentiinae

Xanthorhoini

Xanthorhoe holophaea (Hampson, 1899)



Male genitalia - aedeagus -- female genitalia

BC ZSM Lep [14018](#), 14019, 14020, 14021, 14061

***Disclisioprocta natalata* (Walker, 1862)**

Male genitalia - aedeagus -- female genitalia

BC ZSM Lep [14016](#), 14017, 14060

Eupitheciini***Eupithecia urbanata* Fletcher, 1956**

Male genitalia - aedeagus -- female genitalia

BC ZSM Lep [14013](#), 14014, 14015

***Pasiphila socotrensensis* (Herbulot, 1994)**

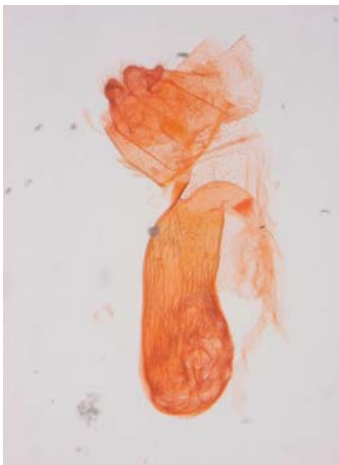
Male genitalia - aedeagus -- female genitalia

BC ZSM Lep [14010](#), 14011, 14012, 14062

Sterrhinae

Sterrhini

Idaea africanarabica khameesi Hausmann, 2009



Male genitalia (paratype) - aedeagus (paratype) -- female genitalia (paratype)

BC ZSM Lep 14024 (holotype), 14025, 14058, 14059

Scopulini

Oar pratana (Fabricius, 1794)

(Hausmann 2006)

***Scopula (Zygophyxia) tornisecta* (Prout, 1916)**

Male genitalia - aedeagus -- female genitalia

BC ZSM Lep [14057](#)

***Scopula colymbas* Herbulot, 1994**

Male genitalia - aedeagus -- female genitalia

BC ZSM Lep [14031](#), 14032

***Scopula fulvicolor* (Hampson, 1899)**

Male genitalia - aedeagus -- female genitalia

BC ZSM Lep [14026](#), 14027

***Scopula dhofarata* Wiltshire, 1986**



Male genitalia - aedeagus -- female genitalia

BC ZSM Lep [14028](#)

***Scopula latitans* (Prout, 1920)**



Male genitalia - aedeagus -- female genitalia

BC ZSM Lep [14029](#), 14030, 14056, 14051, 14052

***Scopula lactaria* (Walker, 1861)**



Male genitalia - aedeagus -- female genitalia

BC ZSM Lep [14036](#), 14037

***Scopula adelpharia* (Püngeler, 1894)**

(Hausmann 2006)

***Scopula minorata* (Boisduval, 1833)**

(Hausmann 2006) Presence on the island awaiting confirmation. Some barcoded specimens with *minorata* habitus revealed to belong to *S. rhodinaria*

***Scopula rhodinaria* (Rebel, 1907)**

Male genitalia - aedeagus -- female genitalia

BC ZSM Lep 14033, 14034, 14035, [14038](#), 14039, 14040, 14050, 14051, 14055

***Scopula (Glossotrophia) disparata* (Hampson, 1903)**

Male genitalia - aedeagus -- female genitalia

BC ZSM Lep 14041, [14042](#), 14043, 14044, 14049, 14053, 14054

Cosymbiini***Traminda mundissima* (Walker, 1861)**

Male genitalia - aedeagus -- female genitalia

BC ZSM Lep [14022](#), 14023

***Palaeaspilates mariusi* Hausmann, 2009**



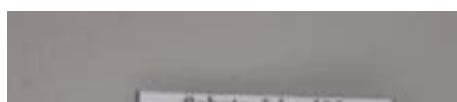
Male genitalia (holotype) - aedeagus (holotype) -- female genitalia (paratype)

BC ZSM Lep [13996](#) (holotype), 13997, [13998](#), 13999, 14000

Geometrinae

Comostolini

***Eucrostes pygmaea* Rebel, 1907**





Male genitalia - aedeagus -- female genitalia

BC ZSM Lep 14001, [14002](#), 14045, 14046

Species status confirmed by DNA barcode data

Hemitheini

Phaiogramma faustinata (Millière, 1868)



Male genitalia - aedeagus -- female genitalia

BC ZSM Lep [14009](#)

Neromia pulvereisparsa (Hampson, 1896)



Male genitalia - aedeagus -- female genitalia

BC ZSM Lep 14007, [14008](#)

Mimaplasta canui Herbulot, 1993





Male genitalia - aedeagus -- female genitalia

BC ZSM Lep [14005](#), 14006

Microloxiini

Microloxia ruficornis Warren, 1897



Male genitalia - aedeagus -- female genitalia

BC ZSM Lep [14003](#), 14004, 14047, 14048

possibly referring to two different species, cf. Hausmann (2009)

Acidaliastis micra Hampson, 1896

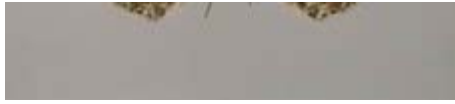
(Hausmann 2006)

Ennominae

Boarmiini

Cleora rothkirchi amydropa Fletcher, 1967





Male genitalia - aedeagus -- female genitalia

BC ZSM Lep [13993](#), 13994

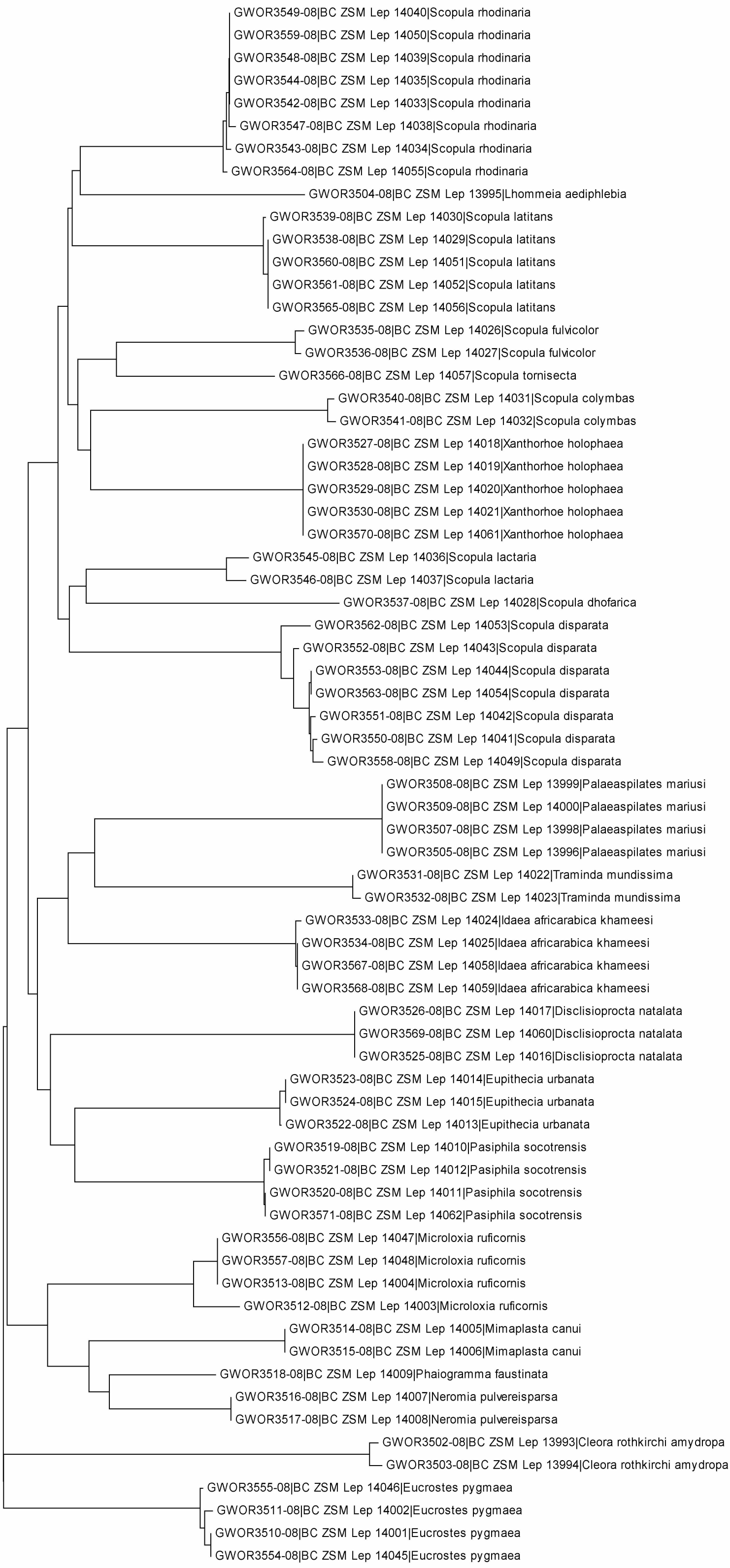
Caberini

Lhommeia aediphlebia (Hampson, 1899)



Male genitalia - aedeagus -- female genitalia

BC ZSM Lep [13995](#)



0.01