

# Ancient associations of aquatic beetles and tank bromeliads in the Neotropical forest canopy

Michael Balke<sup>\*†‡</sup>, Jesús Gómez-Zurita<sup>\*§</sup>, Ignacio Ribera<sup>¶</sup>, Angel Viloria<sup>||</sup>, Anne Zillikens<sup>\*\*</sup>, Josephina Steiner<sup>††</sup>, Mauricio García<sup>‡‡</sup>, Lars Hendrich<sup>\*</sup>, and Alfred P. Vogler<sup>†§§</sup>

<sup>\*</sup>Zoological State Collection, Muenchhausenstrasse 21, 81247 Munich, Germany; <sup>†</sup>Department of Entomology, The Natural History Museum, London SW7 5BD, United Kingdom; <sup>§</sup>Institut de Biologia Molecular de Barcelona, Centre d'Investigació i Desenvolupament–Consell Superior d'Investigacions Científiques, Jordi Girona 18-26, 08034 Barcelona, Spain; <sup>¶</sup>Departamento de Biodiversidad y Biología Evolutiva, Museo Nacional de Ciencias Naturales, Consejo Superior de Investigaciones Científicas, José Gutiérrez Abascal 2, 28006 Madrid, Spain; <sup>||</sup>Centro de Ecología, Instituto Venezolano de Investigaciones Científicas, Apartado Postal 21827, Caracas 1020-A, Venezuela; <sup>\*\*</sup>Zoologisches Institut, Universität Tübingen, Ob dem Himmelreich 7, 72076 Tübingen, Germany; <sup>††</sup>Laboratório de Abelhas Nativas, Centro de Ciências Biológicas, Universidade Federal de Santa Catarina, Campus Universitário, Trindade, 88.040-900 Florianópolis, Brazil; <sup>‡‡</sup>Centro de Investigaciones Biológicas, Facultad de Humanidades, Universidad del Zulia, Apartado Postal 526, Maracaibo 4011, Zulia, Venezuela; and <sup>§§</sup>Division of Biology, Imperial College London, Silwood Park Campus, Ascot SL5 7PY, United Kingdom

Edited by May R. Berenbaum, University of Illinois at Urbana–Champaign, Urbana, IL, and approved February 29, 2008 (received for review October 31, 2007)

Water reservoirs formed by the leaf axils of bromeliads are a highly derived system for nutrient and water capture that also house a diverse fauna of invertebrate specialists. Here we investigate the origin and specificity of bromeliad-associated insects using Copelatinae diving beetles (Dytiscidae). This group is widely distributed in small water bodies throughout tropical forests, but a subset of species encountered in bromeliad tanks is strictly specialized to this habitat. An extensive molecular phylogenetic analysis of Neotropical Copelatinae places these bromeliadicolous species in at least three clades nested within other *Copelatus*. One lineage is morphologically distinct, and its origin was estimated to reach back to 12–23 million years ago, comparable to the age of the tank habitat itself. Species of this clade in the Atlantic rainforest of southern Brazil and mountain ranges of northern Venezuela and Trinidad show marked phylogeographical structure with up to 8% mtDNA divergence, possibly indicating allopatric speciation. The other two invasions of bromeliad water tanks are more recent, and haplotype distributions within species are best explained by recent expansion into newly formed habitat. Hence, bromeliad tanks create a second stratum of aquatic freshwater habitat independent of that on the ground but affected by parallel processes of species and population diversification at various temporal scales, possibly reflecting the paleoclimatic history of neotropical forests.

aquatic arthropods | evolution

The Bromeliaceae represent an outstanding adaptive radiation of vascular plants (1, 2). They are the largest (nearly) exclusively Neotropical family of flowering plants, with >2,600 species and 56 genera in a great variety of habitats, from granitic outcrops, coastal dune fields, and tropical rainforests to high-altitude cloud forests. Despite this great diversity, the major adaptive diversification of bromeliads derives from a common ancestor dated to only some 20 million years ago (MYA), possibly related to the evolution of CAM photosynthesis, epiphytism, and impounding leaves (2–4). More than half of the species in 26 genera are epiphytic (1), and particularly species with rosulate water and debris impounding tanks (phytotelmata) strongly contribute to the characteristic appearance of the Neotropical forest canopy (5). Bromeliad phytotelmata can be impressive, holding up to 45 liters of water each (6) and up to 50,000 liters per hectare (7). They often represent the only abundant lentic habitat in Neotropical forests (8).

Not surprisingly, bromeliad water tanks harbor a diverse aquatic fauna of >400 species including insects and amphibians, many of which are strictly dependent on this habitat (9, 10). Whereas most species merely undergo their larval development in the tanks, including bromeliad-breeding frogs, odonates, mosquitoes, and marsh beetles (Scirtidae) (9, 11), various rotifers, crustaceans, and diving beetles (Dytiscidae) are associated with these specialized habitats throughout their entire life cycle.

The latter include several species in the subfamily Copelatinae, a group of medium-sized ( $\approx 5$  mm) beetles dominating small standing-water habitats throughout the tropics including some 140 species from the Neotropics. Six species currently placed in the genera *Aglymbus* and *Copelatus* have been described or are here newly reported from water tanks in at least seven bromeliad genera, *Aechmea*, *Brocchinia*, *Guzmania*, *Hohenbergia*, *Nidularium*, *Tillandsia*, and *Vriesea*.

Bromeliads are an important feature of the Neotropical biota that have impacted biodiversity through time (12). However, the relevance of this water source for the evolutionary biology and diversification of their inhabitants remains unclear. Bromeliad tanks may simply add island-like freshwater habitat patches, easily available to organisms capable of flight such as *Copelatus*, which depend on small, ephemeral water bodies. The availability of bromeliads in addition to the typical surface water habitats may affect the spatial distribution, overall abundance, and dispersal patterns of the beetles. Alternatively, bromeliadicolous communities may have persisted in isolation without using other aquatic habitats, as suggested by a surprising species diversity and allopatric species distributions in ostracod crustaceans endemic to Jamaican bromeliads (12). Equally, a molecular phylogenetic analysis of a radiation of Jamaican land crabs included a single bromeliad-inhabiting species that separated from other lineages up to 3 MYA (13), also supporting the antiquity of bromeliad associations. The long-term persistence of bromeliad-dependent lineages may be expected specifically in flightless invertebrates, including ostracods, which show specific phoretic associations with amphibians for dispersal (14), whereas more dispersive, flighted groups may show a mixed utilization of bromeliad tanks and aquatic habitats on the ground (9). Although the Copelatinae found in bromeliads are generally assumed to be specific to this habitat (15, 16), the stringency and

Author contributions: M.B., J.G.-Z., and A.P.V. designed research; M.B., J.G.-Z., I.R., A.V., A.Z., J.S., M.G., and L.H. performed research; M.B. and J.G.-Z. analyzed data; and M.B., J.G.-Z., I.R., and A.P.V. wrote the paper.

The authors declare no conflict of interest.

This article is a PNAS Direct Submission.

Data deposition: The sequences reported in this paper have been deposited in the GenBank database [accession nos. AM947384–AM947434 (cob), AM945966–AM946014 (rrnL), AM945593–AM945649 (cox1), and AM945690–AM945739 (h3)].

<sup>†</sup>To whom correspondence should be sent at the present address: Department of Biological Sciences, National University of Singapore, 14 Science Drive 4, Singapore 117543. E-mail: michael.balke@yahoo.de.

This article contains supporting information online at [www.pnas.org/cgi/content/full/0710368105/DCSupplemental](http://www.pnas.org/cgi/content/full/0710368105/DCSupplemental).

© 2008 by The National Academy of Sciences of the USA

**Table 1. Marker performance and tree statistics**

| Gene fragment    | Variable characters | Informative characters | Tree length | No. of trees | Confidence interval | Retention index | <i>P</i> distance average* | <i>P</i> distance range* |
|------------------|---------------------|------------------------|-------------|--------------|---------------------|-----------------|----------------------------|--------------------------|
| <i>cob</i>       | 176                 | 159                    | 1,281       | 16           | 0.219               | 0.549           | 0.161                      | 0–0.232                  |
| <i>cox1</i>      | 317                 | 294                    | 2,116       | 7            | 0.245               | 0.569           | 0.133                      | 0–0.180                  |
| <i>nad1-rrnL</i> | 354                 | 248                    | 1,182       | 55           | 0.412               | 0.685           | 0.074                      | 0–0.107                  |
| H3               | 108                 | 90                     | 371         | 594          | 0.442               | 0.730           | 0.063                      | 0–0.106                  |
| Total            | 955                 | 791                    | 5,184       | 6            | 0.280               | 0.580           | 0.111                      | 0–0.181                  |

\*Ingroup only.

evolutionary persistence of these specialized associations in the presence of other freshwater bodies remain unclear (9) but have important implications for lineage evolution. We therefore investigated the origin of bromeliad associations and the evolution of diversity and endemism in this habitat in the context of a continental-scale molecular phylogeny of Neotropical Copelatinae.

## Results

**Habitats.** We obtained confirmation of strict associations with bromeliads for *Aglymbus bromeliarum*, which was abundant in *Guzmania* water tanks up to 45 m high in the canopy of montane forest in Rancho Grande, Maracay, Venezuela. These forests were rather dry, and no other *Copelatus*, or indeed any other diving beetle, was found outside of the water tanks during an intensive search conducted by H. Escalona and M.B. in 2004. The species had previously been found in *Tillandsia* sp. in Trinidad (15) and in *Tillandsia fendlerii* at Altos de Pipe, Caracas (by A.V. in 2004). Detailed studies on *Aglymbus bimaculatus* in Salesópolis, São Paulo, recovered adults and larvae abundantly from tanks of *Vriesea jonghei*, *Nidularium innocentii*, and *Aechmea pectinata*, growing at a height of 0–13 m in the Atlantic Rainforest, but never outside bromeliads (16). *A. bimaculatus* (described from São Paulo, Brazil) and *A. bromeliarum* (from Trinidad) are morphologically readily separated from all other Copelatinae and thus easy to identify. Both species have never been found outside bromeliads and were absent among otherwise rich museum collections of Neotropical *Copelatus* sampled from surface water habitats. Two possibly undescribed species from Venezuela (*Copelatus* sp. 1) and Brazil (*Copelatus* sp. 2) are here reported from bromeliads for the first time. They were found in water tanks of *Guzmania cylindrica* and *Guzmania lingulata* as well as *N. innocentii*, respectively. We conducted intensive searches of puddle habitats in the adjacent areas but did not find these species outside bromeliads. Finally, two *Copelatus* species, not available for sequencing, were reported from *Brocchinia cordylinoides* in the Kaieteur National Park of Guyana (15) but not from any other habitat. This further suggests that bromeliad associations are a species-specific trait acquired by only a minority of copelatines, which, however, are widely distributed in the Neotropical region.

**Molecular Phylogenetics.** To provide the evolutionary context for the bromeliadicolous species, 57 specimens representing all major lineages of Neotropical Copelatinae were included in a combined analysis of one nuclear and three mtDNA loci. Among 2,283 characters in the aligned matrix 43.1–49.3% of positions were variable in the three mtDNA loci versus 33.8% in histone 3 (H3), resulting in 791 parsimony-informative characters, of which 82 were in H3. Sequence divergence was also consistently higher for the mtDNA markers (Table 1). Alignment of the length-variable *rrnL* marker was conducted with a variety of alignment algorithms, including a tree-generating alignment implemented in POY (17). Simultaneous analysis using parsimony and Bayesian methods of tree construction produced trees

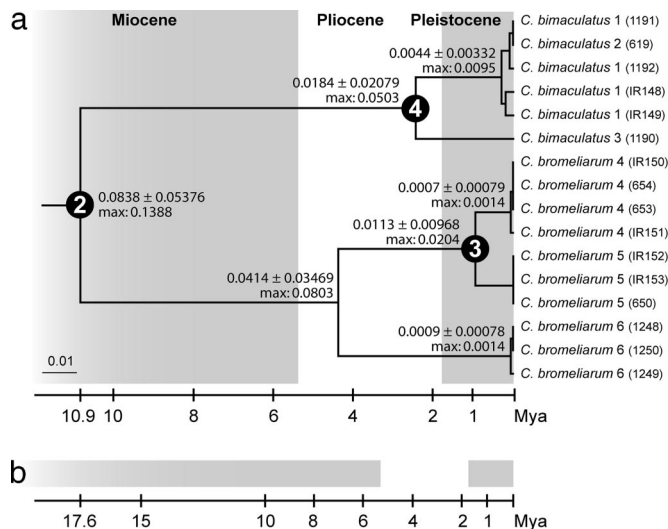
of very similar topology (Fig. 1). Different alignments of *rrnL* had minimal effect on the topology [supporting information (SI) Fig. S1]. Node support was high except for the basal branching within the *Copelatus* clade, although the monophyly of *Copelatus* (Fig. 1, node 1) was strongly supported [Bayesian posterior probability (PP) = 1.0; parsimony bootstrap (BS) = 87].

The bromeliadicolous *A. bimaculatus* and *A. bromeliarum* were sisters and unambiguously nested within *Copelatus* (Fig. 1, node 2; PP = 1.0, BS = 84). These species had been placed in *Aglymbus* because they lack metacoxal lines on their ventral side, a suggested diagnostic [but homoplastic (18)] character of this genus. Reassessment of this trait has already resulted in the transfer of the Afrotropical and Malagasy *Aglymbus* to *Copelatus* and *Madaglymbus*, respectively (18). Hence, we transfer here both bromeliadicolous species to the genus *Copelatus*, with the following taxonomic changes: *Copelatus bimaculatus* (16), new combination, and *Copelatus bromeliarum* (Scott, 1912), new combination.

The sequence information was used to establish a temporal framework for the evolution of this group by using the standard insect mtDNA molecular clock of 2.3% divergence  $\text{my}^{-1}$  (19), supported by evidence from Fijian *Copelatus* (20). The crown age of the bromeliad-associated clade, and therefore the minimum age for the origin of this association, was dated to between 12.3 and 14.1 MYA depending on the model of branch length distribution (each with wide confidence intervals; Table 2). These values increase to 16.1–23.6 MYA if the date is inferred from the age of the common ancestor with the nonbromeliadicolous sister taxon (stem group node; Fig. 1, node 1). Different alignment procedures had only a very minor impact on these estimates, as is evident from measures of sequence divergence. The divergence of *C. bimaculatus* and *C. bromeliarum* (relevant to assessing the minimum age of the bromeliad clade) under the four alignment procedures produced distance estimates in a very narrow range (average uncorrected patristic distances  $P = 0.108$ – $0.111$ ; corrected under a GTR model =  $0.118$ – $0.122$ ). A larger sample of this clade including 16 specimens (six specimens for *C. bimaculatus* and 10 for *C. bromeliarum*, from three localities each) was sequenced for *cox1*, and the resulting clock-constrained tree was calibrated by using the estimated age interval for node 2. Each sampling region formed a monophyletic clade, and genetic distance increased with geographical distance. Total *cox1* sequence divergence (Fig. 2) between populations of *C. bromeliarum* from Maracay and Caracas ( $\approx 60$  km apart) was 2%, and between these and samples from Trinidad ( $\approx 600$  km) a maximum of 8%. Similarly, *cox1* divergence between individuals of *C. bimaculatus* from Florianópolis and Nova Friburgo ( $\approx 800$  km) was 5%. Specimens from Florianópolis and Santo Amaro ( $\approx 30$  km) were in the same haplotype cluster, suggesting the lack of phylogeographical structure at this small geographical scale (Fig. 2, MB619 and MB1191).

Two further species of *Copelatus* from bromeliad water tanks fell within a clade otherwise containing species from forest floor puddles (Fig. 1, node 5, PP = 1.0, BS = 87). *Copelatus* sp. 1 from Venezuela diverged from its puddle-inhabiting sister species





**Fig. 2.** Phylogenetic tree of the *C. bromeliarum/C. bimaculatus* clade. One of nine equally parsimonious trees based on the *cox1* gene is shown (all other trees differed in zero- or near zero-length branches). Two different tree calibrations (a and b) are given corresponding to the extreme values of the 95% confidence interval of node 2 age estimated in Fig. 1 and Table 2 assuming a constant clock. Localities: 1, Santo Amaro; 2, Florianópolis; 3, Nova Friburgo; 4, Maracay; 5, Altos de Pipe; 6, Trinidad.

habitat initially and ultimately promoted the evolution of a specialized lifestyle. Although their propensity for dispersal is still evident, our findings argue against the suggestion (9) that bromeliad tanks are used only occasionally in combination with other habitats.

The broad taxonomic coverage of Neotropical copelatines allowed the placement of bromeliad-associated lineages relative to species not found in this habitat. Thus, bromeliadicolous taxa previously assigned to the genus *Aglymbus* were recognized as morphologically derived *Copelatus*. Dating of this lineage along the subtending branch places this group to anywhere between 12.3 MYA (dated for the minimum, i.e., crown group, age) and 23.6 MYA (maximum age for the stem group), although the value for the more realistic lognormal branch length distribution applied during rate smoothing would reduce this maximum age to 16.4 MYA. These estimates are similar to that for the earliest bromeliad lineages containing water impounding species (4) and indicate that copelatines began to use the bromeliad water tanks soon after this new ecosystem became available.

In two other cases, the associations with bromeliad tanks were inferred to be more recent, indicating repeated origins in a mixed clade of surface water- and bromeliad-inhabiting taxa. These newly discovered species, plus two other *Copelatus* exclusively reported from bromeliads but not available here for sequencing, morphologically resemble typical *Copelatus* and might therefore lack specific adaptations attributable to the associations with bromeliads. However, although we know little about the biology of these species, their tight association with bromeliads at the sampling localities was unequivocal. Detailed morphological studies will have to assess any consistent allometric shifts in body shape parameters or body size, in comparison to their respective sister taxa, to establish evolutionary trends at the early stages of bromeliad associations. Further biogeographic analyses of these species and their equally poorly known sisters will identify the source of bromeliad-associated species either from a local or distant pool of ancestral species to test evidence for ecological speciation in sympatry.

**Intraspecific Variation and Phylogeography.** Bromeliad water tanks are spatially clearly delimited and therefore suitable to investigate

diversification and endemism in narrowly defined habitat patches. In our analyses, intraspecific variation reflected physical distances and known biogeographical barriers. Thus, the estimated divergence between the populations of *C. bimaculatus* from the northern and southern Mata Atlántica (2.2–4 MYA; Fig. 2) is in agreement with phylogeographic evidence from pitviper populations in this region, showing a divergence of 3.8 MYA in the wake of orogenic events that caused changes in precipitation regimes and fragmentation of the Atlantic Forest (21, 22). The genetic split between these lineages is supported by the fixation of subtle morphological differences. *C. bimaculatus* from Nova Friburgo is completely black, whereas the southern populations have a characteristic reddish patch on the base of the otherwise black elytra, suggesting the possibility of further speciation within the group.

An even greater divergence (up to 8%, corresponding to 2.9–4.3 MYA) and significant phylogeographic structure occurs in *C. bromeliarum* between three localities in Venezuela and Trinidad. Montane forests near Caracas and Maracay, in the western Cordillera de la Costa, are only ≈60 km apart, yet *cox1* divergence amounts to 2%. Late Pleistocene forest fragmentation due to climatic change is well documented for the region (23–25), and possible marine transgressions along the northern coast dramatically changing the landscape were suggested for the late Pliocene (26). Most likely *C. bromeliarum* is present in the montane forests of the Península de Paria and the Turimikere Massif, which together with northern Trinidad form the isolated eastern Cordillera de la Costa, widely separated from the western Cordillera de la Costa and our localities, Caracas and Maracay, by the river plains west of Barcelona. The present range and genetic divergence of *C. bromeliarum* in these isolated ranges might be explained by rare successful dispersal events followed by allopatric differentiation, as suggested for other Copelatinae (27). The wide river plains of Barcelona never supported the type of montane forests occupied by bromeliadicolous *Copelatus*, but extensive fieldwork would be needed to establish their detailed phylogeographic structure.

The clear geographical structure and reciprocally monophyletic intraspecific subgroups (see ref. 20) would separate these entities under a diagnostic species concept (28). For example, the three populations of *C. bromeliarum* show between 55 (Venezuela vs. Trinidad) and a minimum of 14 (between close Venezuelan localities) unique differences in mtDNA (plus one consistent change in H3 between Venezuela and Trinidad). These strongly structured groups with great divergences also preclude the meaningful application of nested clade analysis (29). Morphological differences were subtle or absent between these groups, and a denser sampling would be necessary to confirm this possibility, but the finding of local differentiation supports the notion of great evolutionary persistence of these specialized lineages.

The deep nodal split between *C. bromeliarum* and *C. bimaculatus* as well as their highly disjointed geographical distribution some 4,500 km apart suggests the possibility of undiscovered species in the area between southeast Brazil and the north of Venezuela. The ancient formations of the Guyana Shield constitute the biogeographic origin of bromeliads and also harbor the center of diversity of the basal bromeliad genus *Brocchinia*, including some species with the tank habit (4). The Mata Atlántica coastal rainforest is also rich in tank bromeliads but is currently isolated from Amazonia by drier biomes of Caatinga and Cerrado. Connections between these areas in the past under changing climates (30) created different configurations of forest and dry formations in the Neotropics (31, 32). Present-day lowland Amazonia features a comparatively depauperate bromeliad flora. Although some large water impounding species exist, these tend to form more upright foliage, concealing the water (D. Benzing, personal communication). These considerations suggest that future searches for unknown bromeliadicolous copelatines should be focused in the northern Mata Atlántica, along the Andean slopes and especially in the Guyana highlands.

In contrast to the *C. bimaculatus* plus *C. bromeliarum* clade, the more recent origin of the bromeliad-associated *Copelatus* sp. 1 and sp. 2 is also reflected in their low intraspecific variation. *Copelatus* sp.1 was collected from two sites  $\approx 380$  km apart in Altos de Pipe, Caracas, and from the Cerro Santa Ana, Península de Paraguaná, but showed identical sequences. Montane forest of Cerro Santa Ana probably formed only during the Pleistocene, and present-day bromeliad habitats might be even younger. The Cerro Santa Ana mountain range is surrounded by an arid zone, and even the entire Cerro was very likely too dry to support moist forest during the last dry period only  $\approx 12,000$  years ago, as in the well documented formations on the opposite side of the Gulf of Venezuela (33). To colonize the Cerro, the beetles had to bridge an arid area to reach a suitable habitat in the Cordillera de la Costa and Sierra de San Luis, crossing a narrow, arid land connection to the Península, presumably by dispersal between water tanks. A striking aspect of the bromeliad associations is the high degree of endemism in several of these vagile beetles, which contrasts with other species with large areas and little genetic divergence. This appears to mirror the situation in puddle-associated species, some of which have huge ranges (including, e.g., *Copelatus caelatipennis*, for which we document here *cox1* divergence of  $<0.2\%$  between localities  $>3,000$  km apart in Bolivia and Guadeloupe; Fig. 1) whereas others appear geographically limited.

## Conclusions

Phytotelmata provide a natural model for the study of interactions in communities and food webs, as they represent simplified microcosms in island-like habitats (9). Phylogenetic analysis is required to bring these composite communities into an evolutionary, comparative framework. Bromeliad phytotelmata represent an ancient habitat, which, as shown here, maintained its specialized fauna over evolutionarily extended periods, in one case reaching back to the earliest origin of the tank habitat itself. This ecosystem is known to include poorly dispersive species such as ostracods, earthworms, and crabs (9). It is striking that these specializations are found also in the generally highly dispersive, winged species of Copelatinae, which might be expected to use other water bodies as well. However, the retention of dispersal abilities seems necessary to avoid local extinctions in the ephemeral bromeliad phytotelmata and therefore may be instrumental in the evolutionary persistence of these associations. Dispersal is an underexplored key factor relevant to virtually all aspects of the composition and evolution of the “tank islands” communities. In copelatines, the high dispersal ability sustains the formation of a network of aquatic habitats parallel to that on the ground, which also produced phylogeographic patterns affected by expansion and contraction of forest habitat in a way similar to the open-water lineages. Comparisons of bromeliad-associated lineages with their open-water sister groups, applied to taxa with various levels of dispersal abilities (e.g., ref. 12), will produce a predictive framework of their population structure, phylogeography, speciation/extinction dynamics, and evolutionary lineage persistence.

## Materials and Methods

**Sampling and Genetic Data.** We included all known genera of Neotropical Copelatinae (*Copelatus*, *Aglymbus*, and *Agaporomorphus*) (Table S1). Preliminary phylogenetic studies of Copelatinae from across their pantropical range revealed that Afrotropical and Malagasy species considered members of *Aglymbus* are monophyletic with *Copelatus* or *Madaglymbus*, respectively

(18, 34), leaving the remaining *Aglymbus* as a monophyletic group confined to the Neotropics. Molecular clock estimates suggest that these groups separated from a common ancestor  $\approx 60$ – $40$  MYA (27, 34), and their current distribution probably involved exchange between continents (27). Trees were rooted by using the Palearctic copelatines *Liopterus haemorrhoidalis* and *Liopterus atriceps* and the Malagasy *Madaglymbus cf. formosulus* and *Madaglymbus elongatus* (34). We sequenced four gene fragments previously used in the group (27), coding for mitochondrial cytochrome *b* (*cob* = 357 bp); cytochrome *c* oxidase subunit 1 (*cox1* = 735 bp); NADH subunit 1 and large subunit ribosomal RNA (*nad1-rrnL* = 750–763 bp); and partial nuclear histone 3A gene (*h3* = 320 bp), using PCR primers and well established procedures (35). Sequences have been deposited in the GenBank database under accession numbers AM947384–AM947434 (*cob*), AM945966–AM946014 (*rrnL*), AM945593–AM945649 (*cox1*), and AM945690–AM945739 (*h3*) (Table S1).

**Phylogenetic Analyses.** The *rrnL* marker showed length variation of up to 13 bp between any two sequences. Alignment was performed by employing a range of recent alignment procedures implementing tree alignment (“direct optimization”) using POY version 3.0.11 (17) and “progressive” alignment procedures including Muscle (36), Prank (37), and Mafft (38). We also performed tree searches on a matrix (based on the Muscle alignment) from which all “gapped” characters had been removed. The POY alignments were generated from simultaneous optimization of nucleotide changes and indels conducted in combined analysis with the three other markers (see ref. 39). An “implied alignment” derived from ancestral character states at nodes can be used for subsequent model-based analyses on the branch length because it presents an explicit optimization of homologies (i.e., optimized for minimal conflict with the other data) that cannot be obtained with other alignment procedures (40). Bayesian analysis on the implied alignment was performed with MrBayes 3.1.2. Tree searches involved four runs and eight chains of  $5 \times 10^6$  generations under a GTR+I+ $\Gamma$  model preferred by Modeltest (41), with and without setting a prior for uniform branch lengths (i.e., constant clock), discarding the initial  $1 \times 10^6$  trees before reaching stationarity in likelihood values (burn-in). Parsimony heuristic searches were conducted in PAUP\* version 4.0b10 (42) using 1,000 replicates of random sequence addition and alternative gap treatment as missing data or a fifth character state. Parsimony bootstrap support was obtained after 1,000 pseudoreplicates with five random sequence addition replicates each.

**Tree Calibration and Node Dating.** We tested for rate constancy with a likelihood ratio test comparing the likelihood scores from the unconstrained and clock-constrained Bayesian analyses. The lack of fossils for Neotropical Copelatinae precluded a direct calibration of tree topologies. Instead, node dating was based on the arthropod standard mtDNA clock of 0.0115 substitutions per site per lineage per MY (= 2.3% pairwise sequence divergence per MY) (19). This rate was applied to the combined three mtDNA markers, and branch lengths as well as associated node ages for relevant nodes were coestimated in a Bayesian framework by using Beast 1.3 and analyzed by using Tracer 1.3 (<http://evolve.zoo.ox.ac.uk/>). Seven relevant nodes were dated (nodes 1–7 in Fig. 1). Three molecular clock models were tested, including a uniform clock model and two relaxed clock models (lognormal and exponential branch length distribution models) (Table 2). Bayesian searches implemented a GTR+I+ $\Gamma$  model and were based on a Markov chain Monte Carlo search with  $1 \times 10^7$  generations.

**ACKNOWLEDGMENTS.** We thank David Benzing, T. Givnish, Ernesto Medina, Hermes Escalona, J. H. Frank, J. C. Navarro, and J. Reichholf for information relevant to this work and helpful comments on the manuscript. We thank Daegan Inward, Rolf Beutel, and Kelly Miller for specimens. We are grateful to Ascanio Rincón (Caracas), who provided invaluable information on the paleoecology of Venezuela. Saul Flores, Jafet Nassar, Ernesto Medina, and Robert Wingfield provided help with identifying the Venezuelan bromeliad species. Processing of samples from Venezuela was possible thanks to the Agreement of Access to Genetic Resources contracted between the Instituto Venezolano de Investigaciones Científicas and the Ministry of the Environment and Natural Resources. We thank Ruth Kühbänder for the drawings. Funding was provided by German Science Foundation Grant DFG BA 2152/3-2, SYNTHESYS Grant GB-TAF 2811, the Natural History Museum London travel fund, British Ecological Society Grant SEPG 2257(a), Spanish Science Ministry Grant CGL2004-00028, and the Alexander von Humboldt Foundation.

1. Benzing DH, ed (2000) *Bromeliaceae: Profile of an Adaptive Radiation* (Cambridge Univ Press, Cambridge, UK).
2. Crayn DM, Winter K, Smith JAC (2004) Multiple origins of crassulacean acid metabolism and the epiphytic habit in the Neotropical family Bromeliaceae. *Proc Natl Acad Sci USA* 101:3703–3708.
3. Givnish TJ, et al. (2004) Ancient vicariance or recent long-distance dispersal? Inferences about phylogeny and South American-African disjunctions in Rapateaceae and Bromeliaceae based on *ndhF* sequence data. *Int J Plant Sci* 165:535–554.

4. Givnish TJ, Millam KC, Berry PE, Sytsma KJ (2007) in *Monocots: Comparative Biology and Evolution—Poales*, eds Columbus JT, Friar EA, Porter JM, Prince LM, Simpson MG (Rancho Santa Ana Botanic Garden, Claremont, CA), pp 3–26.
5. Ozanne CMP, et al. (2003) Biodiversity meets the atmosphere: A global view of forest canopies. *Science* 301:183–186.
6. Zahl PA (1975) Hidden worlds in the heart of a plant. *Natl Geogr Mag* 147:389–397.
7. Williams DD (2006) *The Biology of Temporary Waters* (Oxford Univ Press, Oxford).





Table S1. Extracted specimens data

| Voucher ID | Genus            | Species                   | Country       | Locality                                      | Collector                   | Elevation | Date          |
|------------|------------------|---------------------------|---------------|---|-----------------------------|-----------|---------------|
| IR 147     | <i>Copelatus</i> | sp.                       | Venezuela     | Falcon, Paraquana, Cumbre del Cerro Santa Ana | Viloria, Nassar, and Castro | 818 m     | 4.i.2005      |
| IR 148     | <i>Aglymbus</i>  | <i>bimaculatus</i>        | Brazil        | Sta. Catarina, Sto. Amaro da Imperatriz       | Zilikens                    |           |               |
| IR 149     | <i>Aglymbus</i>  | <i>bimaculatus</i>        | Brazil        | Sta. Catarina, Sto. Amaro da Imperatriz       | Zilikens                    |           |               |
| IR 150     | <i>Aglymbus</i>  | <i>bromeliarum</i>        | Venezuela     | Maracay, Henri Pittier NP, Rancho Grande      | Balke and Garcia            | 1,200 m   | 22.I.2004     |
| IR 151     | <i>Aglymbus</i>  | <i>bromeliarum</i>        | Venezuela     | Maracay, Henri Pittier NP, Rancho Grande      | Balke and Garcia            | 1,200 m   | 22.I.2004     |
| IR 152     | <i>Aglymbus</i>  | <i>bromeliarum</i>        | Venezuela     | Caracas, IVIC, Altos de Pipe                  | Balke and Garcia            | 1,700 m   | 27.I.2004     |
| IR 153     | <i>Aglymbus</i>  | <i>bromeliarum</i>        | Venezuela     | Caracas, IVIC, Altos de Pipe                  | Balke and Garcia            | 1,700 m   | 27.I.2004     |
| MB 074     | <i>Copelatus</i> | sp.                       | Venezuela     |   | Gottwald                    |           | 18.VIII.2001  |
| MB 075     | <i>Copelatus</i> | sp.                       | Venezuela     |   | Gottwald                    |           | 18.VIII.2001  |
| MB 188     | <i>Copelatus</i> | sp.                       | Argentina     | Cordoba                                       | Beutel                      |           | ii.2002       |
| MB 189     | <i>Copelatus</i> | sp.                       | Argentina     | Cordoba                                       | Beutel                      |           | ii.2002       |
| MB 202     | <i>Copelatus</i> | sp.                       | Costa Rica    | Cartago CR 10, Tres de Junio bog              | Balke                       | 2,600 m   | 14viii2002    |
| MB 211     | <i>Copelatus</i> | nr <i>validus</i> ?       | Costa Rica    | Puntarenas CR 13, Dominical                   | Balke                       | 10 m      | 15viii2002    |
| MB 226     | <i>Copelatus</i> | nr <i>laccophilinus</i> 1 | Costa Rica    | San Jose CR 12, W Plantanillo, to Dominical   | Balke                       | 900 m     | 14viii2002    |
| MB 227     | <i>Copelatus</i> | nr <i>laccophilinus</i> 2 | Costa Rica    | San Jose CR 12, W Plantanillo, to Dominical   | Balke                       | 900 m     | 14viii2002    |
| MB 228     | <i>Copelatus</i> | sp.                       | Costa Rica    | San Jose CR 12, W Plantanillo, to Dominical   | Balke                       | 900 m     | 14viii2002    |
| MB 229     | <i>Copelatus</i> | sp.                       | Costa Rica    | San Jose CR 12, W Plantanillo, to Dominical   | Balke                       | 900 m     | 14viii2002    |
| MB 230     | <i>Copelatus</i> | nr <i>postiacus</i> ?     | Costa Rica    | Heredia CR 7, P Viejo, Selva Verde Lodge      | Balke                       | 50 m      | 13viii2002    |
| MB 231     | <i>Copelatus</i> | sp.                       | Costa Rica    | Heredia CR 7, P Viejo, Selva Verde Lodge      | Balke                       | 50 m      | 13viii2002    |
| MB 233     | <i>Copelatus</i> | sp.                       | Costa Rica    | Heredia CR 7, P Viejo, Selva Verde Lodge      | Balke                       | 50 m      | 13viii2002    |
| MB 240     | <i>Copelatus</i> | <i>debilis</i>            | Costa Rica    | Guanac. CR 3, Interam.1, N Liberia            | Balke                       | 10 m      | 9viii2002     |
| MB 242     | <i>Copelatus</i> | <i>caelatipennis</i>      | Costa Rica    | Guanac. CR 3, Interam.1, N Liberia            | Balke                       | 10 m      | 9viii2002     |
| MB 243     | <i>Copelatus</i> | nr <i>laccophilinus</i> 3 | Costa Rica    | Heredia CR 8, PN Braulio Carillo              | Balke                       | 400 m     | 13viii2002    |
| MB 307     | <i>Aglymbus</i>  | sp.                       | French Guyana | Road to Petit Saut                            | Balke and Kotrba            |           | xii.2002      |
| MB 309     | <i>Copelatus</i> | sp.                       | French Guyana | Road to Petit Saut                            | Balke and Kotrba            |           | xii.2002      |
| MB 310     | <i>Copelatus</i> | <i>concolorans</i>        | French Guyana | Road to Petit Saut                            | Balke and Kotrba            |           | xii.2002      |
| MB 311     | <i>Copelatus</i> | sp.                       | French Guyana | Road to Petit Saut                            | Balke and Kotrba            |           | xii.2002      |
| MB 312     | <i>Copelatus</i> | nr <i>prolixus</i> ?      | French Guyana | Crossroad N1/D5                               | Balke and Kotrba            |           | xii.2002      |
| MB 314     | <i>Copelatus</i> | nr <i>longicornis</i> 3   | French Guyana | Swamp at road to Montsinnery                  | Balke and Kotrba            |           | xii.2002      |
| MB 322     | <i>Aglymbus</i>  | new species               | Equador       | Tiputini                                      | Inward                      |           |               |
| MB 324     | <i>Copelatus</i> | <i>abonnenci</i>          | Equador       | Tiputini                                      | Inward                      |           |               |
| MB 325     | <i>Copelatus</i> | sp.                       | Equador       | Tiputini                                      | Inward                      |           |               |
| MB 327     | <i>Copelatus</i> | sp.                       | Equador       | Tiputini                                      | Inward                      |           |               |
| MB 333     | <i>Copelatus</i> | <i>distinctus</i>         | USA           | Arizona, Huachuca                             | Miller                      | 1730 m    |               |
| MB 619     | <i>Aglymbus</i>  | <i>bimaculatus</i>        | Brazil        | Florianopolis, island                         | Zillikens                   |           |               |
| MB 620     | <i>Copelatus</i> | sp.                       | Brazil        | Florianopolis, island                         | Zillikens                   |           | 7.viii.2002   |
| MB 645     | <i>Aglymbus</i>  | cf. <i>pilatus</i>        | Venezuela     | Estado Amazonas, Tobogan de la Selva          | Balke and Garcia            |           | 24.–25.I.2004 |

Table S1. continued

| Voucher ID | Genus                 | Species                 | Country             | Locality                                      | Collector           | Elevation | Date            |
|------------|-----------------------|-------------------------|---------------------|---|---------------------|-----------|-----------------|
| MB 646     | <i>Copelatus</i>      | sp.                     | Venezuela           | Estado Amazonas, Tobogan de la Selva          | Balke and Garcia    |           | 24.–25.I.2004   |
| MB 647     | <i>Copelatus</i>      | sp.                     | Venezuela           | Estado Amazonas, Tobogan de la Selva          | Balke and Garcia    |           | 24.–25.I.2004   |
| MB 650     | <i>Aglymbus</i>       | <i>bromeliarum</i>      | Venezuela           | Caracas, IVIC, Altos de Pipe                  | Balke and Garcia    | 1700 m    | 27.I.2004       |
| MB 651     | <i>Copelatus</i>      | sp.                     | Venezuela           | Caracas, IVIC, Altos de Pipe                  | Balke and Garcia    | 1700 m    | 27.I.2004       |
| MB 653     | <i>Aglymbus</i>       | <i>bromeliarum</i>      | Venezuela           | Maracay, Henri Pittier NP, Rancho Grande      | Balke and Garcia    | 1200 m    | 22.I.2004       |
| MB 654     | <i>Aglymbus</i>       | <i>bromeliarum</i>      | Venezuela           | Maracay, Henri Pittier NP, Rancho Grande      | Balke and Garcia    | 1200 m    | 22.I.2004       |
| MB 752     | <i>Agaporomorphus</i> | <i>knischi</i>          | Peru                | Tambopata, Posada Amazonas                    | Miller              |           | 10xii2003       |
| MB 753     | <i>Agaporomorphus</i> | <i>tamboparicus</i>     | Peru                | Tambopata, Posada Amazonas                    | Miller              |           | 10xii2003       |
| MB 754     | <i>Copelatus</i>      | sp.                     | Peru                | Tambopata, Posada Amazonas                    | Miller              |           | 10xii2003       |
| MB 755     | <i>Copelatus</i>      | <i>caelatipennis</i>    | Peru                | Tambopata, Posada Amazonas                    | Miller              |           | 10xii2003       |
| MB 757     | <i>Copelatus</i>      | sp.                     | Peru                | Tambopata, Posada Amazonas                    | Miller              |           | 10xii2003       |
| MB 758     | <i>Copelatus</i>      | sp.                     | Peru                | Tambopata, Posada Amazonas                    | Miller              |           | 10xii2003       |
| MB 783     | <i>Copelatus</i>      | sp.                     | Brazil              | Sta. Catarina, Sto. Amaro da Imperatriz, #338 | Zillikens           |           |                 |
| MB 785     | <i>Copelatus</i>      | sp.                     | Guadeloupe          | Basse-Terre, La Sufrier                       | Wewalka             | 1100 m    | 5.iv.2004       |
| MB 786     | <i>Copelatus</i>      | <i>caelatipennis</i>    | Guadeloupe          | Grande-Terre, Etang, 8km N St. Anne           | Wewalka             | 100 m     | 10.iv.2004      |
| MB 787     | <i>Copelatus</i>      | sp.                     | Guadeloupe          | Basse-Terre, N Trois Rivières, Grand Etang    | Wewalka             | 400 m     | 8.iv.2004       |
| MB 1190    | <i>Aglymbus</i>       | <i>bimaculatus</i>      | Brazil              | Nova Friburgo, Macae de Cima                  |                     | 1200 m    |                 |
| MB 1191    | <i>Aglymbus</i>       | <i>bimaculatus</i>      | Brazil              | Sta. Catarina, Sto. Amaro da Imperatriz       | Balke and Zillikens | 300 m     | x.2004          |
| MB 1192    | <i>Aglymbus</i>       | <i>bimaculatus</i>      | Brazil              | Sta. Catarina, Sto. Amaro da Imperatriz       | Balke and Zillikens | 300 m     | x.2004          |
| MB 1193    | <i>Copelatus</i>      | sp.                     | Brazil              | Florianopolis, island                         | Balke and Zillikens | 10–200 m  | x.2004          |
| MB 1194    | <i>Copelatus</i>      | sp.                     | Brazil              | Florianopolis, island                         | Balke and Zillikens | 10–200 m  | x.2004          |
| MB 1199    | <i>Copelatus</i>      | sp.                     | Brazil              | Florianopolis, island                         | Balke and Zillikens | 10–200 m  | x.2004          |
| MB 1238    | <i>Copelatus</i>      | nr <i>longicornis</i> 1 | Bolivia             | Warnes  | Megroz              |           | 29.–30.vii.2004 |
| MB 1239    | <i>Copelatus</i>      | nr <i>longicornis</i> 2 | Bolivia             | Warnes  | Megroz              |           | 29.–30.vii.2004 |
| MB 1240    | <i>Copelatus</i>      | <i>caelatipennis</i>    | Bolivia             | Warnes  | Megroz              |           | 29.–30.vii.2004 |
| MB 1241    | <i>Copelatus</i>      | sp.                     | Bolivia             | Samaipata                                     | Megroz              | 2100 m    | 6.–7.vii.2004   |
| MB 1248    | <i>Aglymbus</i>       | <i>bromeliarum</i>      | Trinidad and Tobago | Trinidad, Summit Mt. El Tucuche               | Viloria and Rincon  | 893 m     | 6.viii.2005     |
| MB 1249    | <i>Aglymbus</i>       | <i>bromeliarum</i>      | Trinidad and Tobago | Trinidad, Summit Mt. El Tucuche               | Viloria and Rincon  | 893 m     | 6.viii.2005     |
| MB 1250    | <i>Aglymbus</i>       | <i>bromeliarum</i>      | Trinidad and Tobago | Trinidad, Summit Mt. El Tucuche               | Viloria and Rincon  | 893 m     | 6.viii.2005     |